

PRACTICE PROFILE

Bridges Associates has established over the last 25 years as Ettwein Bridges a strong reputation for successfully addressing complex design and planning issues. Much of our work involves the design of new buildings in sensitive or historic settings, and the conservation of historic buildings.

We have a keen interest, skills and track record in designing within the context of architecturally sensitive sites and Conservation Areas, combined with our considerable experience in hotels, commercial and residential buildings. We regularly assist design teams and other architects on the townscape and heritage aspects of large schemes.

From project inception, we contribute to development strategy through our detailed experience and understanding of how best to negotiate with statutory authorities. This can lead to considerable savings in time and cost at the initial stages of a project.

We are aware that sustainability covers a wide range of environmental considerations and our practice actively promotes the use of renewable resources, responsible resourcing and energy efficiency in the design, construction and operation of buildings.

Our team consists of qualified full-time architectural staff, supported by architecturally trained assistants and specialists. Every project is led by one of the directors, with day to day management by a designated senior project architect.

CURRICULUM VITAE

The following are our key personnel:

Nicholas Bridges BSc. (Hons), BArch. (Hons), RIBA, FRSA, Partner, graduated from the University of Bath in 1981 and joined the practice in 1982. He has been closely involved in projects involving Listed Buildings, their refurbishment and conservation. He also provides consultancy advice on large scale projects which impact upon the historic environment and urban design, often working with other architects. Where necessary, he gives evidence at Planning Inquiries and in Court.

Kevin O'Sullivan BSc. (Hons), BArch. (Hons), MSc., ARB, Technical Director, trained at University College Dublin and joined the practice in 2013. He has a Masters in Energy Conservation and his expertise lies in the technical side of practice. He analyses problems in both historic and new buildings, leading to direct scopes of work for investigation and solutions. Some cases involve specialist advice to lawyers and insurers on liability disputes. He co-ordinates and details complex services and architectural detailing, leading small teams of architects. He is also in charge of IT, BIM and CAD.

CONTACT

Bridges Associates Architects LLP
53 Rawstorne Street
London
EC1V 7NQ

Telephone:

+44 (0)20 7837 1008

Nicholas Bridges

Web:

nb@bridgesassociates.co.uk
www.bridgesassociates.co.uk

A selection of our current and past projects is illustrated below:

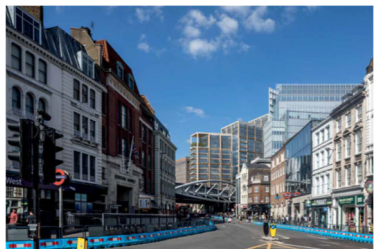


**2021 -
current**

**Townscape and Visual Assessment
Royal London Hospital, Whitechapel**

Townscape and Visual assessment for Environmental Statement for designs for new medical services cluster on 10 plots by architects Allies & Morrison and Gibson & Thornley

NHS Property
Services



2021

**Townscape and Visual Assessment
Colechurch House, Southwark**

Objection to proposed redevelopment of 1960s office due to harm caused to heritage and townscape, including the setting of the Shard and London Bridge cluster

Private Client



**2020-
current**

Premier House, Edgware

Townscape assessment of additional three floors to pay for the recladding of 1960s tower block, carried out by the previous owner and which does not comply with post-Grenfell fire precautions. Application submitted December 2020, designs by GML Architects

Betterpride
Ltd.

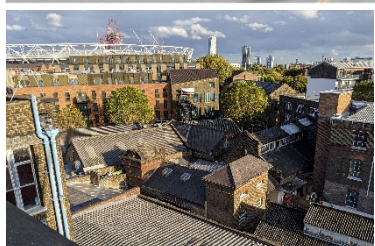


**2020 -
current**

Onslow Street, Guildford

Townscape and Heritage assessment of refurbishment of 1980s office block in the town centre, designed by architects Buckley Gray Yeoman

M&G Real
Estate



**2020-
current**

**Fish Island
Heritage and Townscape Consultants**

Assessment of heritage significance of multiple sites in the Fish Island conservation area, with advice on heritage and townscape for the potential redevelopment of three sites.

Private client



**2020-
current**

**Conquest House, Bromley
Townscape Consultants**

Townscape and visual assessment for a planning application, a tall building designed by Dunnett Craven Architects, for mixed uses for the redevelopment of 1970s offices in Bromley Town Centre. Submitted in December.

Kitewood
Estates Ltd.



**2020 -
current**

**Heritage and Townscape Consultants
Highland Road, SE19**

Private client

Assessment of proposed redevelopment by Milan Babic Architects of parts of the Central Hill Estate, originally designed by Rosemary Stjernstedt under the direction of Ted Hollamby, adjacent to the Gipsy Hill conservation area.



**2020 -
current**

**Heritage Consultants
White Hart Inn, London Road, Mitcham**

Private client

Assessment of reasons for refusal of new-build apartments in curtilage of C18 Grade II listed pub as part of briefing of Counsel. Heritage Statement for appeal and assessment of revised scheme for pre-application to LB Merton. Heritage Assessment of Listed Building and revised proposals for new applications



**2020-
current**

**ExCel Centre – Phase 3, Royal Docks
Townscape and Heritage Consultants**

ExCel London

ES scoping and Townscape and Visual Impact Assessment of proposed extension to the Excel Exhibition Centre

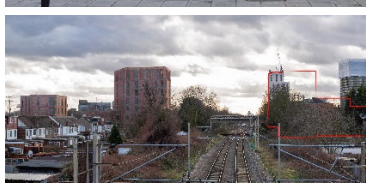


**2020 -
current**

**Heritage Consultants
Hyde Park Square, London W1**

Private clients

Heritage assessment for refurbishment of lateral conversion, including identifying unauthorised works inherited from previous owners. Listed building consent and planning permission granted.



**2020 -
current**

**Townscape Consultants
Gilda Avenue, Enfield**

Origin
Housing

Views and Townscape assessment of new apartments as part of wider densification adjacent to the Lea Valley. Planning application submitted.



**2020 –
current**

**Heritage & Townscape consultants
North Street, Romford**

Regency
Homes Ltd.

Evidence on heritage and townscape at a Public Hearing for the regeneration of two large sites adjacent to the Romford CA in the newly designated Metropolitan Centre, designed by GML architects. The Appeal was allowed with the Inspector concluding no harm to the CA and other designated heritage assets.



**2019 –
current**

**Architects
Gattos, Garret Lane, Wandsworth**

Private client

Design for redevelopment of a closed hardware store into a small block of flats. Planning application submitted in November 2020.



**2019 -
current**

Expert Witness

Assessment of the reasons for the collapse of repaired C18 ceilings in a Grade I listed building

Private Client



**2019-2021 Heritage Consultants
Wimbledon**

Private Client

Assessment of proposals by architects Form Studio for both the demolition and façade retention of altered C19 house in West Wimbledon CA, considered by the Council as a Non-Designated Heritage asset. Both appeals against refusal won after an online Hearing



**2019 -
current**

Welwyn Garden City

Heritage and Townscape Opportunities and Constraints appraisals of 5 sites in the northern town centre within the internationally significant conservation area. Working with architects Allies & Morrison on design parameters, visual assessments and Building Codes, augmenting Council Design Guidance, as part of the Employer's Requirements for tendering by Design & Build developers.

Welwyn
Hatfield
Borough
Council



**2019 -
current**

**Townscape & Heritage consultants
East Finchley Power Station**

Private client

Consultancy on redeveloping a 1939 building for the extension to the Northern Line, adjacent to the Hampstead Garden Suburb conservation area. Designed by Charles Holden, architect for London Transport, who also designed at the same time East Finchley Underground Station nearby listed Grade II.

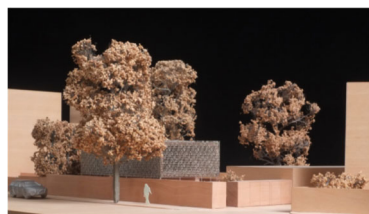


**2019 -
current**

**Architects
Holyfield Fishery, Waltham Abbey**

Private Client

Feasibility Study and pre-application of site beside the River Lea, including restoration and conversion of 1767 Grade II listed barn



**2019 -
current**

Manor Avenue, SE4 1PD

Heritage Assessment of a new house designed by William Matthews in the garden of a Grade II house.

Private Client



**2019 -
current**

North View, Wimbledon

Heritage assessments for two applications to either retain the façade or demolish a house on the edge of the Common, a heavily altered undesignated heritage asset in the Wimbledon CA. Designs by Form Studio Architects. Appeal Statements prepared and now lodged. Hearing delayed due to Covid-19.

Private Client

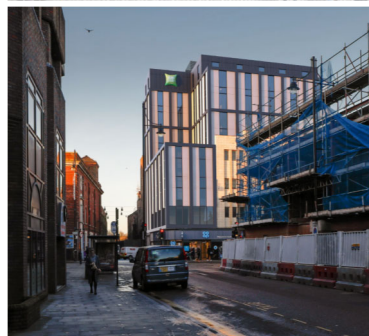


2019

Camberwell Union, Southwark

Evidence at Public Inquiry on townscape, visual and heritage topics for the replacement of uninhabitable and run-down industrial units with a denser mixed-use local centre. The design by architects HTA just south of Burgess Park will add permeability and provide 35% affordable housing, maker spaces, retail and new public realm.

Peachtree Services Ltd.



2019

South Street, Romford

Evidence at a Public Hearing for the retention of a simple Art Deco faience façade and rebuilding higher and lighter above as a 124-bedroom hotel to designs by Maith Architects. The site is 9 metres from the Elizabeth Line Station with a PTAL rating of 6b in a newly designated Metropolitan Centre and the most appropriate location for a tall building. The appeal was won and is now under construction.

Romford (South) Ltd.



**2019 -
2020**

Leeside

Townscape and Visual assessment of flats designed by Kruszelnicki Leetch Architects to meet the needs of the religious community. The application was permitted in June 2020.

Archester Ltd.



**2019 -
current**

Hatfield Town Centre

Heritage Assessment of the impact of the redevelopment and densification of three sites on the Grade I listed Hatfield House and other designated assets

Welwyn Hatfield Borough Council



**2018 -
2020**

Architects

11 Bloomfield Street SW1

Listed building consent obtained for demolition and rebuilding rear extension to Grade II house on the Grosvenor Estate in Pimlico. Design development and detailing completed.

Private Client



**2018 -
current**

High View, Hatfield

Heritage Assessment of rebuilding of a replacement densified Local Centre, designed by Levitt Bernstein Architects, adjacent to Grade II listed St. John's Church by Peter Bosanquet (1960). Application submitted April 2019 and approved in 2020.

Lovells for
Welwyn
Hatfield BC



**2018 -
2020**

Pepper Street, E14

Townscape and Visual Assessment for the modest redevelopment, designed by Assael Architects, of the 1980s PH on Millwall Dock, now in the shadow of the Canary Wharf Towers. Permitted in 2020.

Westgroup
Investments
Ltd.



**2018 -
2019**

A40 Western Avenue – Site 10

Townscape and Visual Assessment of Co-Living accommodation designed by Contemporary Design Solutions Architects for a long narrow site available from TfL after road widening. Approved March 2019, now under construction.

Private Client



**2018 -
current**

Edgware Road, NW2

Heritage Assessment of WWII communications bunker designed for the Admiralty if Whitehall had to be evacuated. Selection of viewpoints for TVIA of design by Todd Architects. Planning application submitted in November 2020.

Amafh
Investments
Ltd.



**2018 -
current**

**Architects
Ealing Fields High School**

Heritage assessment of and detailed scopes of works and details for part-demolition and repairs to Grade II listed C18 mansion, Place House, in remnants of parkland landscape. Integrated into a new 4FE secondary school designed by Stride Treglown architects. Permission and listed building consent obtained October 2018, occupied September 2020.

Bowmer +
Kirkland /
Education &
Skills Funding
Agency

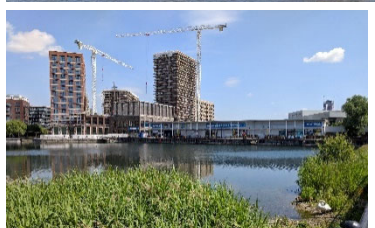


2018

Columbia Wharf, Rotherhithe

Heritage assessment of proposed riverside extensions by ICA Architects to Grade II converted warehouse.

Docklands
Riverside Hotel
Ltd.



**2018-
2020**

Canada Water, SE16

Townscape and Visual Assessment for Environmental Statement as part of a full planning application for designs by Maccreannor Lavington Architects of Site E, in the context of British Land's current application adjacent, now approved by LB Southwark..

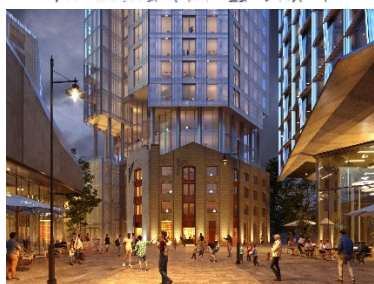
Sellar



**2018-
2020**

St. Thomas Street, SE1

Representations to LB Southwark on tall buildings policy. TVIA Sellar consultancy with Renzo Piano Building Workshop to client and other adjacent landowners on constraints and opportunities, including impact on the Tower of London World Heritage site

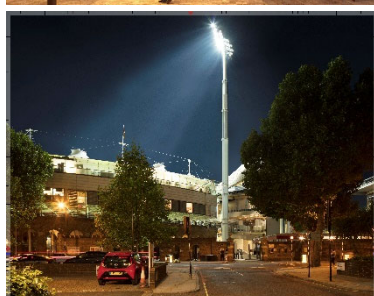


**2018 -
current**

Bermondsey Street-Snowsfields, SE1

Heritage Assessment of an unlisted warehouse and proposals for two tall buildings in the Bermondsey Street conservation Area, filling a bomb site and replacing non-descript 1980s offices and shed. Submitted February 2019, not yet determined.

Three Ten
Bermondsey
Ltd.



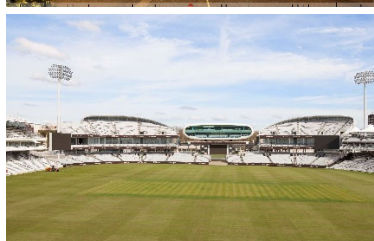
**2018 -
2019**

Heritage Consultants

Lord's Cricket Ground – Floodlights

Heritage and Townscape Assessments in four Minor Modification applications to make permanent the existing temporary planning permissions. Applications approved October 2019

M.C.C.



**2018 -
current**

Listed Building Consultants

Compton & Edrich Stands, Lords Cricket Ground, St. John's Wood

Heritage Appraisal of non-designated heritage assets to be demolished; Assessment of adjacent modern buildings for potential designation; Assess heritage, townscape and visual impact for designs by Wilkinson Eyre Architects – permitted January 2019. Under construction and due to be completed for the 2021 season.

M.C.C.



**2019-
2020**

Architects

North Clock Tower, Lord's Cricket Ground

Applications to discharge pre-demolition commencement conditions approved 2019. Including Written Scheme of Investigation. Scope of work for demolition contractor to salvage materials and the clock for future re-erection on site.

M.C.C.



**2108 -
current**

Expert Witness

Grade II* listed house in Hampstead

Assessment of architect's negligence in permitting significant unauthorised works. Review replacement architect's work and brief QS on criteria for the quantum of claim.

Instructing
Solicitors



**2018 –
2019**

Powis Street, Woolwich

Assessment of tall buildings and townscape constraints and opportunities in Woolwich town centre, with assessment of two tall buildings by Conran + Partners.

Artisan
Woolwich Ltd.



**2017 -
2019**

Architects

South Black Lion Lane, Hammersmith

Conversion of former office into Community Café, yoga studio, meeting rooms. Planning permission obtained and construction completed July 2019.

Private Client



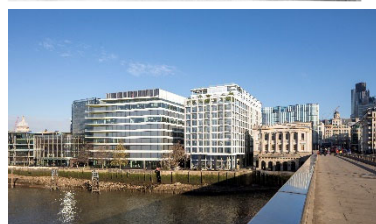
**2017 -
current**

Architects

1 Canonbury Place, Islington

Restoration and additions to the Grade II house where Sir Basil Spence lived and had his design office from 1956 – our former office. Planning and listed building applications for repairs and refurbishment submitted May 2019.

Rathbone
Trust Co. Ltd.



**2017 –
2019**

**Listed Building Consultants
Seal House, City of London**

Historic Environment research and advice on application for new office building, designed by Eric Parry Architects, adjacent to Grade II* Fishmonger's Hall and London Bridge. Planning application approved March 2019

Sellar Property
Group



**2017 –
current**

Historic Environment – Leigate, SE12

Heritage and townscape contribution to Environmental Assessment for rebuilding of 1966 shopping centre in association with revised design by Maccreannor Lavington Architects.

St. Modwen



**2017 -
current**

Architects

Harrington Gardens, SW7

Designs to ameliorate unauthorised works by others to a pair of Grade II houses, designed by George & Peto, c.1882. Drawings for planning and listed building applications for remediation works.

JWI
Management
Services Ltd.



2017

Heritage Consultants – Greenwich Magistrates Court

Assessment of the heritage and townscape significance of the listed former Magistrates court, the Ashburnham Triangle Conservation Area, and undesignated heritage assets of the former London Board School building.s on the site. Advice on modifications to the proposals.

Cresswick and
London
Strategic Land
Ltd.



2016 -
2018

Hatfield – One Town Centre

Assessment of impact on the setting of Grade I listed Hatfield House of proposed redevelopment by Welwyn Hatfield Council of Hatfield town centre, including wider study of impact of tall buildings and modern character affecting its setting.

Welwyn
Hatfield
Council



2016 -
2018

Store Road, North Woolwich, Newham

Townscape and Visual assessment of proposed residential building designed by BPTW Architects on derelict site beside the Woolwich Ferry landing. Planning application submitted in June 2017 and approved

Hyde Housing
& Galliford Try



2016

St Mary Redcliffe, Bristol

Heritage and townscape advisor to team lead by Carmody Groark architects for selected competition entry for major new parish facilities, facilitating the wider Community Plan

Parish of St
Mary Redcliffe



2016

Townscape and Visual consultancy – Hanger Lane

Assessment of impact of tall building for student accommodation by Squire & Partners in the middle of the gyratory, with major enhancement to the public realm. Permitted and under construction



2016

Tall Buildings consultancy – Anston House, Brighton

Advising team led by Conran + Partners for rebuilding of 1960s office building with 250 flats beside the listed Preston Park in its conservation area. Permitted in December 2016.

First Base

2019



2016 -
2019

Architects and Heritage Consultants

Appraisal of Martello Towers D and E and feasibility report for different use. Contribution to conference organised by Historic England on Martello Towers July 2019

Tendring
District
Council and
Historic
England



2016 -
current

Listed Building Consultants

Lord's Development Study & Compton & Edrich Stands

Assessment of undesignated modern buildings for likelihood of designation. Advice to client on limits to development opportunities to avoid harming the buildings settings and prompting protective designation. Discussions with Historic England on prospects for designation. Appointed in 2018 to advise Wilkinson Eyre on the redesign of the Compton and Edrich Stands, including TVIA submitted October 2018

M.C.C.

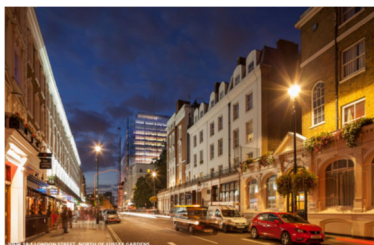


**2015 –
current**

Heritage, Townscape and Visual consultancy – Paddington Quarter

Great Western
Developments

Assessment of undesignated heritage assets – proposed demolition of the Paddington Sorting Office and preservation of the Post Office Railway, to enable the development of offices and retail uses with a new piazza. This will deliver public benefits of major public transport and public realm improvements. Permitted after Judicial Reviews rejected in 2018. Demolition completed, now under construction.



**2015 -
2020**

Architects – Norris Castle, Isle of Wight

Private Client

Heritage assessment, urgent works, repairs, proposed change of use and conversion of and additions to Grade I house and Grade I farm yard and walled garden, within Repton landscape overlooking the Solent. Heritage architect for proposals, repairs, Enabling Development calculations and scope for Environmental Assessment.

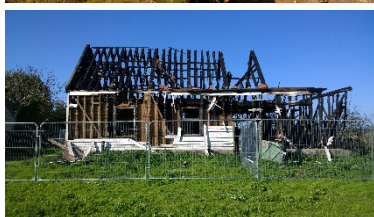


**2015 -
2019**

Historic Environment – Tintagel Castle, Devon

Heritage advice to William Matthews Architects and Ney + Partners structural engineers for competition winning design to connect the castle to the mainland. Completed 2019

William
Matthews
Architects



**2015 –
2016**

**Historic Environment and Townscape
Walton Green**

Trinity College
Cambridge

Assessment, repairs and proposals for curtilage listed stables to Grade II* Walton Hall, as part of designs by Saunders Architects for 400 houses on farmland near Felixstowe, Suffolk. Post-application assessment and proposals for urgent works following serious arson damage.



2015

**Heritage, Townscape and Visual consultancy
Greenwich Peninsular Masterplan.**

Knight Dragon

Peer review and report on the TVIA for major revisions to Greenwich Peninsula prior to submission for planning approval



**2015 -
2017**

Architects and Heritage Consultants

Uplands Conference Centre, High Wycombe

Assessment of Grade II listed residential conference centre designed by Edward Cullinan Architects in 1981, in landscape by Georgina Livingstone, within the Chilterns AONB. Our designs for conversion and extension were permitted in 2016 with no conditions on the listed building consent.

Uplands High
Wycombe LLP



**2015 -
2017**

Historic Environment and Townscape – Hammersmith

Heritage and townscape assessment for refurbishment and additions by Lifschutz Davidson Sandilands to very large building in a domestic scaled conservation area

Cambridge
House Realty
Ltd.



2014-15

Historic Environment and Townscape – Mount Clare

Heritage assessment with design and townscape advice to new student accommodation in the curtilage of the Grade I listed Palladian Villa overlooking Richmond Park, in the setting of the Grade II* Roehampton Estate by the LCC Architects Department

Trustees of the
Methodist
Church



**2014 –
2015**

Historic Environment – Moor Park, Farnham

Heritage Assessment of C19 extension to Grade II* mansion in designated landscape as part of proposed conversion to residential use

Private client



2014-15

Historic Environment – Belgrave Road, Pimlico, SW1

Heritage Assessment of 1954 office building for the J Arthur Rank Organisation for permitted conversion into flats by Simon Bowden Architecture

Penwell
Design
Concepts Ltd.



**2014 –
2015**

Historic Environment – Lloyd Square, Clerkenwell

Heritage Assessment of proposed rooftop extensions to Grade II houses on the unique Lloyd Baker Estate, within its own conservation area

Private client



**2014 –
2015**

Historic Environment – Manor House, Great Durnford

Heritage Assessment of Grade II house which had been subject to complex damaging works of dubious legality before being purchased by the client for restitution and restoration

Private client



2014 –
2016

Historic Environment – Ashley House, Epsom

Heritage Assessment of Grade II* listed Palladian house in Epsom Town Centre as part of conversion from offices to residential, now permitted

Private client



2014 -
2016

Heritage and Townscape – Holyrood Street, Southwark, SE1

Heritage and townscape assessment of site and surroundings for new residential tower block by Conran + Partners as part of urban regeneration and creation of new pedestrian desire lines on proposed Low Line beside the railway viaduct into London Bridge Station.

Britel Fund
Trustees Ltd.



2014 -
2016

Listed Building and Townscape Consultants

South Western Project, Lords Cricket Ground, St. John's Wood

M.C.C.

Heritage Appraisal of existing Allen Stand (1935), Tavern Stand (1966-68), and Thomas Lord Suite, for replacement designs by Populous architects including new Harris Garden Building. Pre-application consultations with Westminster, GLA and Historic England. Townscape and visual assessment for planning application. Permitted 2015.



2014 –
2016

Historic Environment – Heroncourt, Farnham, Surrey

Heritage Assessment of undesignated former farmhouse and proposals for two new houses in the grounds

Searchfield
Homes

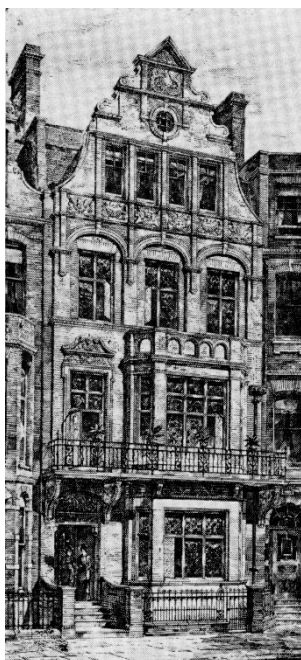


2014 –
2016

Historic Environment – Leigate, SE12

Heritage and townscape contribution to Environmental Assessment for rebuilding of 1966 shopping centre in association with Maccreannor Lavington Architects

St. Modwen



**2013 -
2015**

Historic Environment

Egerton Gardens, London SW3

Private clients

Assessment of Queen Anne style house and submission to English Heritage for designation as part of objection on behalf of leaseholder to harmful works by the landlord



**2013 -
2014**

Historic Environment

South Hampstead Synagogue, Belsize Park, London NW3

Private clients

Objection to overdevelopment and submission to English Heritage for designation of important building designed in 1958 by Lyons Israel Ellis architects, the office where James Stirling, James Gowan, Richard McCormack, Douglas Stephen, Kenneth Frampton, Neave Brown and David Gray worked.



**2013 -
2015**

Historic Environment

Springfield, Maidstone, Kent

Auger Buchler

Heritage appraisal of setting and former parkland setting of Grade II listed house by Alfred Waterhouse, built for the owner of the factory making Whatman's papers.



**2013 -
2016**

Townscape and Visual Assessment

Lee Green, Lewisham

St. Modwen

Environmental Assessment of comprehensive rebuilding of 1960s derelict retail and residential with Maccreannor Lavington Architects. Permitted in 2016.



2013-2014

Historic Environment

Model of the Mohne Dam, Building Research Centre

BRE

Listed at grade II, assessment of its historic significance in the development of Barnes Wallis's bouncing bomb developed for the successful Dam Busters raid in WWII.



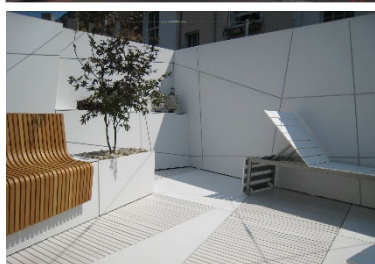
**2013 –
2015**

Historic Environment

Fielden St. Thomas – new residential tower in London Bridge Quarter

LBQ Fielden

Appraisal of existing building in conservation area opposite Guy's Hospital and adjacent to listed terraces. Townscape and Visual assessment of design by Renzo Piano Building Workshop. Pre-application consultations with Southwark Council, GLA, EH, HRP etc. Heritage, Townscape and Visual Assessment to accompany planning and listed building applications. Under construction.



**2013 -
2014**

Consultant Architects

Assessment of unauthorised high-quality modern roof terrace Private Client in Notting Hill. Pre- and subsequent application for retrospective approval, granted.



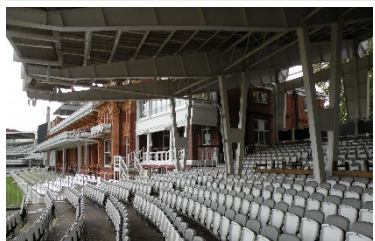
**2013 –
2016**

Listed Building Consultants

The Warner Stand, Lords Cricket Ground, St. John's Wood

M.C.C.

Heritage Appraisal of existing stand (1956-57) for replacement design by Populous architects. Pre-application consultations with Westminster and English Heritage. Townscape and visual assessment for planning application. Opened in May 2017.



**2012 -
2017**

Listed Building Consultants

Master Plan - Lords Cricket Ground, St. John's Wood

M.C.C.

Heritage Assessment of listed buildings, conservation area and overall site to assist master plan proposals by Populous for pre-application submission to Westminster City Council.



**2012 -
2014**

Historic Environment

Clapperhill, Pamber End, Hants.

Private Client

Appraisal of pre-fabricated house and the building types by Boulton & Paul of Norwich, erected north of Basingstoke c1926. Not designated.



**2012 -
2013**

Architects

Associate UK architects to Shanghai-based architects Neri & Hu for the conversion and additions to the former Bow Street Magistrates Court and Police Station into a 5* hotel and Police Museum

Bow Street
Hotel Ltd



2012 -
2013

Environmental Assessment

Assessment of major residential and retail development at Canada Water, master planned and designed by Maccreannor Lavington and David Chipperfield Associates, involving a 40-storey tower with potential impacts on Mayor's statutory views, Tower of London and Greenwich World Heritage Sites, and other heritage assets. Planning permission was granted in November 2013

Investec/Sellar



2012

Listed Building Consultants Phene Arms PH, Chelsea

Research into history of this and other pubs in the Chelsea conservation area. Evidence at public inquiry into proposed change of use to residential

Bourne Capital



2012 -
2013

Historic Environment

Laundry Cottage, Albury Park, Surrey

Heritage Assessment for alterations and extension by URS of curtilage listed converted former laundry, within Grade I listed landscape. Research into building type for submission to English Heritage following request for spot listing by Guildford BC

Albury Park
Estate



2012 -
2016

Architectural Advisors to the Residents Company, Highpoint 1 and Highpoint 2, Highgate, London

On-going programme of repairs and alterations to the iconic 1930s apartments blocks designed by Berthold Lubetkin, listed Grade I.

Mantra Ltd.



2012 -
2013

Historic Environment

Research and heritage appraisal for new houses in middle of Shoeburyness Garrison CA, in settings of listed buildings, and on Bronze Age scheduled monuments

Garrison
Developments



2011-12

Listed Building Consultants Eaton Place, SW1

Heritage assessment for proposals to refurbish and modernise an early house in a prime street in Belgravia with its Mews house adjacent, with a new basement underneath both.

Private client



2011-12

Listed Building Consultants

Prince Albert Road, NW1

Research into the complex evolution of the NW edge of Nash's Regents Park and Heritage assessment of proposed changes to a grade II villa on one of the sites. Heritage advice to architect and evidence at appeal.

Private client



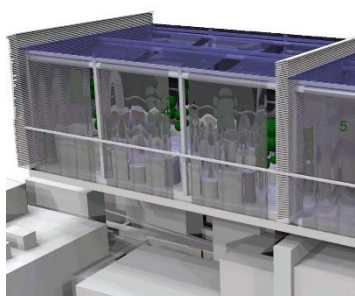
2011

Historic Environment

The Leasows, Chipping Campden

Research and evidence at appeal for a new house in a CA and in setting of listed houses worked on by C R Ashbee.

Private client



2012

Architects

Cigar Lounge at the Mayfair Hotel, London

Design and construction of a new 'free standing' 40 seat cigar lounge located within an existing light well and connected to the hotel by a glass covered walkway.

Radisson
Edwardian
Hotels

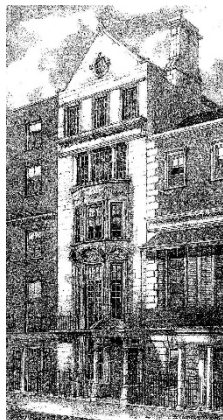


2011- 2013 Historic Environment

Land east of High Street, Halstead, Essex

Appraisal of treed site partly within CA, adjacent to and within settings of LBs, and with 15 WWII air raid shelters. Detailed research in to building type and comments on scheme by Saunders Architects

Tesco Stores
Ltd.



2011

Charles Street, W1

Research into history of unlisted facade in the Mayfair CA and other works by the same architect to support a scheme to reface in stone as originally conceived – permitted and built.

Earlcrown Ltd.



2010-11

Historic Environment

Moullin House

Research and appraisal of redundant 1950 neo-classical hostel in Ealing CA, and potential for replacement with houses.

Methodist
Trinity Circuit



**2010 -
2015**

Architects and Listed Building Consultants

Royal Hospital, Wolverhampton

Research and appraisal of derelict large Grade II listed hospital in All Saints conservation area. Assisted architect with integration of store with listed building and proposals for features. Heritage Statement with applications and negotiations with statutory authorities, granted November 2011.

Tesco Stores
Ltd.
Bowmer +
Kirkland

Site: Survey of condition for materials analysis; detailed proposals for repairs; brief for recording prior to demolition/alterations – all to discharge detailed listed building consent conditions and provide sub-contract packages.

2015 – repairs and restoration works completed



**2010 -
2011**

Architects and consultants

Pollen Street Social, London

Consultant architects to Shanghai-based Neri & Hu for large new restaurant off Regent Street for master chef Jason Atherton. Approvals from statutory authorities and landlords, detailing of street facade

Pottage Ltd.



**2010 -
2012**

Historic Environment

Walton-on-the-Naze, Essex

Research into tide mills as part of comments on Environmental Statement for proposals to fill in Walton Mere, destroying the site of one of the largest East Coast tide mills and the setting of Martello Tower 'K'



**2010 -
2014**

Historic Environment

Walton-on-the-Naze, Essex

Research and appraisal of site in the setting of a listed and scheduled Martello Tower, also on the edge of a conservation area. Appraisal of proposals by Michael Aukett Architects and Heritage Statement for planning application for new store. Design for restoration and new use

Tesco Stores
Ltd./ Martello
Investments



**2010-
2012**

Listed Building Consultants

Syon Park – Wyevale Garden Centre

Site and building appraisal for pre-application master-plan submission to our designs; updating of old Conservation Plan

Syon Park Ltd.



**2010 -
2013**

**Listed Building Consultants
Walton, Felixstowe, Suffolk**

Heritage Assessment of setting of Grade II* Walton Hall and assisting Saunders Architects in their masterplan for extension to Walton village, to include new store and housing. Submission to English Heritage not to list stables on the site (successful) and contribution to Environmental Statement with chapter on Heritage

Tesco Stores
Ltd. & Trinity
College
Cambridge



**2010-
2011**

**Architectural Consultant
31 Liberia Road, London N5**

Advice to client following incompetence by architectural consultant – householder appeal, negotiations with LPA, redesign and reapplication

Private client



2010 -2011 Architects

New houses in Whitechapel

Planning and building regulations consents obtained for four new build five-bedroom family houses on a very difficult site set within the Myrdle Street Conservation Area of Whitechapel. The houses are designed to achieve Level 4 of the Code for Sustainable Homes and to meet Lifetime Homes standards. Completed in 2012.

Network
Housing
Group/GLA



2010 -2011 Architects

City House Apart Hotel Cannon Street

Design and construction for the conversion of an existing vacant 7 storey C19 warehouse into a mix of 32 studio and one-bedroom serviced apartments

City
Apartments
Ltd



**2008 -
2011**

Architects

Syon Park Hotel London – Waldorf Astoria

Design & construction of 134-bedroom hotel 5-star hotel in the Grade I listed grounds of Syon Park as part of restoration of Capability Brown's landscape secured through Enabling Development

Ability Group

Left. View of main entrance



Left. View of conference and banqueting wing



2010-
2011

Ryde House, Richmond Road, Twickenham

Site and context appraisal for pre-application proposals for rebuilding of 1970s office block in CA on approach to Richmond Bridge

Associated
Newspapers
Pension Fund



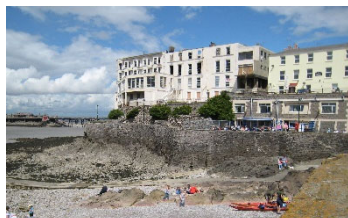
2009

Historic Environment

Power lines from Hinkley C to Bristol, Somerset

Assessment of impact on historic environment of proposed 400kV routes around Nailsea and Wraxall in the setting of Tynesfield House

Private client



2009 –
2011

Historic Environment

Royal Pier Hotel, Weston-super-Mare

Appraisal of fire-damaged hotel and conservation area on a stunning site overlooking Weston Bay and the Bristol Channel, and assessment of proposed rebuilding, designed by Conran & Partners – granted unanimous planning permission and CAC in 2011

CNM Estates



2009

Listed Building Consultants

Dex Car Park, Newcastle-upon-Tyne

Appraisal for listability of early 1931 multi-storey building with Art Deco influences, and submission to DCMS – not listed

DTZ for
Newcastle City
Council

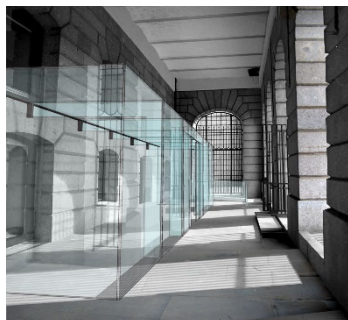


2009-
2010

Listed Building Consultants

Expert witness in prosecution for criminal damage to a Listed Building in rural Hertfordshire

Private Client



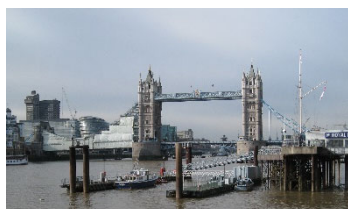
2008-
2010

Architects

Fishmongers' Hall, London Bridge, EC4

Design of new glazed lobby within portico of Grade II* Listed Building and SAM; Conservation Statement and submission of planning and scheduled monument consent for alterations with Cluttons

Worshipful
Company of
Fishmongers



2008 -
2010

Historic Environment

St. Thomas Street, SE1

Appraisal of local and London-wide impact on historic environment of three very tall buildings by Herzog & De Meuron to conclude London Bridge Quarter.

Sellar
Developments



2008-
2010

Listed Building Consultants

Joint Court expert witness in prosecution for criminal damage to a Listed Building: Putney Bridge.

HM Court
Service



**2008 -
2010**

**Conservation Area Appraisal
Little Clarendon Street, Oxford**

Appraisal of Central Oxford CA and assessment of proposed partial rebuilding of corner site designed by Oxford Architects. Granted planning permission and conservation area consent. Now complete

Shirehall
Properties Ltd.



**2008-
2009**

Architects

Architects for the alteration and refurbishment of listed single family home designed to a very high specification of and finish in Onslow Gardens, SW7

Private Client



2008

**Historic Environment
Shrewsbury House, Cheyne Walk, SW3**

Appraisal of block of flats overlooking the River Thames and assessment of proposed extra storey

Constantine
Land



2008

**Heritage assessment and Feasibility Study
Equitable House, Gordon Square, Woolwich**

Heritage Assessment of the HQ of the Woolwich Equitable Building Society for Barclays Bank with proposals for conversion

Barclays Bank
PLC



2008

**Listed Building Consultants
North Westminster Community School, W2**

Appraisal of 1960s school with sports hall for listability on major development site north of Paddington Basin, with proposals designed by Terry Farrell & Partners. Not listed

Knight Frank
for
Westminster
City Council



**2008-
2010**

**Listed Building Consultants
Hammersmith Terrace, W6**

Appraisal of proposals by Helm Architects for modern additions to two Grade II* houses and assessment for Listed Building Consent

Private clients



**2007-
2009**

**Historic Environment
Acton Tram Depot, High Street, W3**

Appraisal of site for listability in context of London-wide tram system and CA; assessment of proposed high-density housing scheme by Architecture 519. Evidence at public inquiry – permitted, now demolished and completed

Crest
Nicholson plc



**2007-
2009**

**Listed Building Consultants
Portsmouth Football Club**

Historic Environment research, advice and Environmental Impact Assessment on two potential sites: The Hard opposite the Historic Naval Dockyard, and Horsea Island opposite Portchester Castle

Sellar Property
Group



**2007-
2010**

**Architects
Weedon Depot: repairs to B66**

Repairs to structure, perron bridge and envelope to Grade II* listed portcullis guard building over canal

Reland
(Weedon) Ltd.



**2007-
2008**

**Architects
Flemings Mayfair Hotel**

Comprehensive improvements, repairs and conservation work to this 4-star hotel in Mayfair, occupying 13 listed buildings between Half Moon and Clarges Streets, just north of Piccadilly.

Veladail Hotels



2006-7

**Architects
Crockfords**

Alterations, extensions and conservation work to the prestigious private members gaming club in this listed Grade II* building including interiors by Robert Adam. This includes the annexation of an adjoining listed building for use as company offices.

Stanley Leisure



2006-7

**Architects
Angel Hotel, Midhurst**

Historic buildings appraisal for our design and planning permission for part conversion and new residential in and adjacent to grade II* listed buildings in conservation area and adjacent to Cowdray Park

Angel Hotel



2006-7

**Urban Design
Croydon Gateway Arena**

Reappraisal of scheme including an 18,000 seat Arena to regenerate site next to East Croydon Station. Revisions to Environmental Statement and evidence at public inquiry

Arrowcroft plc
for Croydon
Council



2006-7

Listed Building Consultants
Former West Middlesex Hospital

Conservation Appraisal of site of former Workhouse Infirmary, design consultancy, and Environmental Assessment for planning application for major public housing adjacent to Syon Park

English Partnerships with Wilmott Dixon



2006-8

Listed Building Consultants
Seal House, City of London

Historic Environment research and advice on application for new office building adjacent to Fishmonger's Hall, designed by David Chipperfield Architects – granted planning permission

Sellar Property Group



2005-6

Architects
William Kent House

Refurbishment of Grade II* listed building as part of works to unite as function rooms and suites with the Ritz Hotel

Ellerman Investments

RIBA Award Winner 2007
Westminster Society Restoration Award 2009



2005

Listed Building Consultants
New London Bridge House

Historic Environment Impact Assessment for planning application for new offices to replace tower by Richard Seifert, in the setting of Southwark Cathedral. Guy's Hospital and the St. Thomas Street conservation area. Part of the new London Bridge Quarter around London Bridge Station

Sellar Property Group



2005

Architects
Palace of Westminster

Covered way through Star Chamber Courtyard adjacent to House of Commons – Grade I listed and World Heritage Site. Site photography of finished construction not permitted

Parliamentary Works Services Directorate



**2005 -
2016**

Architects

Les Ambassadeurs

Mansion

Reconstruction and extensions to this Grade II* listed private members' club, including new gaming areas, roof garden and restoration of the restaurant.



2005-7

Urban Design

Croydon College

Croydon
Vocational
College

Advice on urban design issues for new mixed use tower extension; research into history and evolution of town and College; submission of Design & Townscape Assessment with planning application by Nightingale Associates.



**2004 -
2010**

Listed Building Consultants

Eaton Square, SW1

Private Client

Historic Building Consultancy for a high specification restoration of a Grade II* listed house back to use as a single house, with new basement swimming pool and integral garage. One of many large and small stucco buildings in Belgravia we have worked on.



**2004 -
2008**

Urban Design & Listed Building Consultants

Streatley-on-Thames, Berkshire

Gladedale
Homes

Appraisal of village in AONB and public consultation on proposals for various sites by McDowell & Benedetti architects



**2004 -
2006**

Architects

Mayfair Hotel, London

Radisson
Edwardian
Hotels

New 80-bedroom extension and penthouse for the existing 5-star hotel, and additional conference rooms, banqueting suites and bars, all completed without the closure of the hotel.



**2003 -
2017**

Architects
Radisson Edwardian Hotels
London Collection

Architects for the programmed refurbishment and extensions to the Hampshire, Marlborough, Grafton, Sussex and Leicester Square Hotels in London. The work includes additional bedrooms, conference spaces, new services and lifts.

Radisson
Edwardian
Hotels



2003-5

Listed Building Consultants

Research and documentation of Cambridge Central Conservation Area and Appraisal for new residential scheme

Ballymore
Properties Ltd.



**2003 –
2004**

Listed Building Consultants

Conservation Appraisal of three office buildings by Lord Esher in Station Road, Cambridge, as part of proposals for refurbishment and extensions by CMC Architects

Turnstone
Estates Ltd.

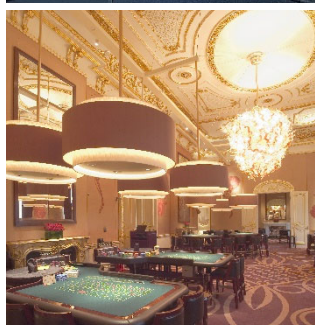


**2003 -
2008**

Listed Building Consultants

London Bridge Tower: researching the history of and assessing the impact on the numerous listed buildings of Europe's tallest tower, designed by Renzo Piano, and presenting this at public inquiry. Now completed.

Teighmore
Ltd.



**2003 –
2005**

Architects

50 St. James' Street, London
Refurbishment of gaming areas with new club facilities in a listed building in association with Interior Designers Jeffrey Beers International, New York. The work includes the new 50 below club lounge in the basement.

London Clubs
International
with Robert
Earl



2003 -
2004

Architects

Radisson Edwardian Hotel, Heathrow

Planning permission obtained for a new 456-bedroom extension to a flagship 5-star hotel on Bath Road, Heathrow, including a new convention centre, conference rooms, new glazed atrium and health spa.

Radisson
Edwardian
Hotels

Left: View of recently completed atrium within the existing hotel.



Left: View of the project model showing the proposed extension.

Radisson
Edwardian
Hotels



2003

Architects

Barford Court, Hove

Extensions and alterations to Grade II listed Art Deco retirement home in Conservation Area on the seafront

RMBI



2002 –
2005

Architects

The Members' Pavilion at Lord's Cricket Ground, London

Marylebone

Alterations, extension and refurbishment of Grade II* members Cricket Club pavilion and club facilities for the MCC. The £6.0 million contract was completed between cricket seasons.



2002 –
2003

Listed Building Consultants

Architectural and historical assessment of Brentwood Community Hospital and High Wood Hospital, including representations to DCMS.

South Essex
Partnership
NHS Trust.



2002 –
2006

Listed Building Consultants

Successfully proposed the spot listing of this house in the Cape Private Client Dutch style in the Wimbledon North Conservation Area; appraisal of North Wimbledon CA.



2001-
2002

Listed Building Consultants

St. Michael's Hospital, Lichfield
Research and Conservation Assessment of Grade II listed
workhouse by Scott & Moffatt, and buildings within its setting

South
Staffordshire
Healthcare
NHS Trust



2001 –
2016

Architects

The Cavalry Centre, Weedon Bec, Northants.
Conservation Plan, surveys and conversion of eight Grade II*
listed warehouses to specialist retail and offices, with new
mezzanine floors; listed building repairs. Planning permission
for creation of Fireworld Museum in Building 17

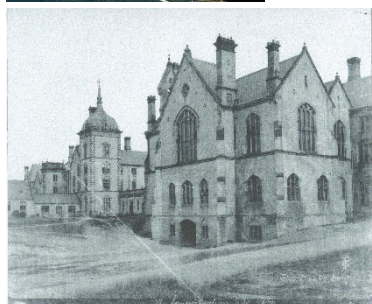
The Cavalry
Centre



1999-2001 **Architects**

Kensington, London W8
Refurbishment as a private residence of one of the oldest
houses in the Borough of Kensington and Chelsea, dating
from 1703, Listed Grade II, in the Kensington Square
Conservation Area

Private Client



1998-
2003

Listed Building Consultants and Architects

Fairfield Hospital, Stotfold, Bedfordshire
Evidence at Public Inquiry; designs for proposed re-use of
Listed Grade II former mental asylum; negotiations on
Enabling Development. Seven applications for planning and
listed building consent granted for conversion and new
buildings

Wiggins Group
plc



1997-
2007

Architects

The Ritz Hotel, Piccadilly, W1
Bedroom extension, new lift and general alterations to Listed
Grade II* Hotel

The Ritz Hotel

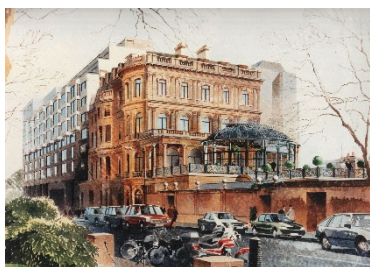


1996-8

Architects

London Clubs International £5.0m
50 St James's Street, SW1.
Conversion of Listed Grade II building into flagship Casino Club

London Clubs
International



1996

Architects

Les Ambassadeurs Club

Extension and internal alterations to Grade II* casino in a mansion off Park Lane.

London Clubs
International



1995

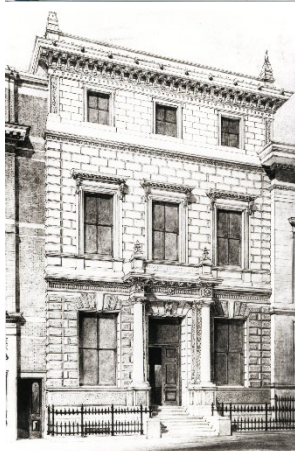
Architects

Diocese of London £2.5m

Church of St Ethelburga, City of London

Competition winning scheme for conservation based new development of bomb-damaged medieval church, Listed Grade I

Diocese of
London



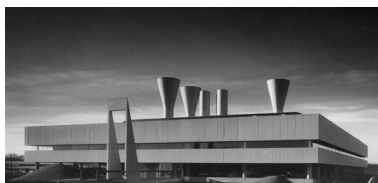
1995-8

Architects, in conjunction with AMEC

The Law Society, Chancery Lane £8m

Comprehensive extensions and improvements to the Listed Grade II* headquarters building, and adjoining annexe

The Law
Society



1994

Listed Building Consultants

Research and submissions to Department for National Heritage on listability of two important industrial buildings by Ryder & Yates in Killingworth, Northumberland : Norgas House and the Gas Engineering Research Station

British Gas



1993

Architects

Hawkstone Park Hotel, Shropshire

New golf clubhouse and ancillary work, as Phase I of hotel improvements.

Hawkstone
Park Leisure